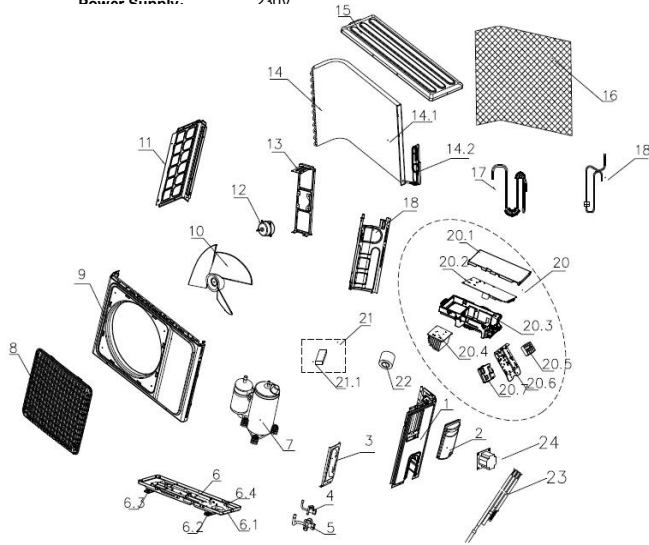


## AIR-O-MATIC RAC Exploded View

**Factory Model:** AOMC12DPE17  
**Product Code:** AOM11104210000085PE  
**Power Supply:** 230V



No.	Part Name	Quantity	BOM Code
1	Right Side Board	1	AOM11321007000287PE
2	E-parts Cover	1	AOM11321008000014PE
3	Valve Plate	1	AOM11321031000027PE
4	Stop Valve	1	AOM11325042000030PE
5	Stop Valve	1	AOM11225517000006PE
6	Chassis Assembly	1	AOM11221502000434PE
6.1	Ahassis	1	AOM11321014000144PE
6.2	Base Footing	2	AOM11321023000012PE
6.4	Screw Bolt	3	AOM14731005000042PE
7	Compressor	1	AOM11223003000285PE
8	Panel Grille	1	AOM11321022000241PE
9	Panel	1	AOM11321005000115PE
10	Axial Flow Fan	1	AOM1132009000049PE
11	Left Side Board	1	AOM11321006000108PE
12	Motor	1	AOM11230005000002PE
13	Motor Support	1	AOM11321002000039PE
14	Condenser Assembly	1	AOM11224004001291PE
14.1	Condenser Assembly	1	AOM11224006000426PE
14.2	Capillary Assembly	1	AOM11225506001800PE
15	Top Cover	1	AOM11321009000033PE
16	Cardboard	1	AOM11332009000044PE
17	Suction Pipe Assembly	1	AOM11225504000788PE
18	Discharge Pipe Assembly	1	AOM11225505000927PE
19	Partition Board	1	AOM11321025000048PE
20	Main Controller	1	AOM11222004000518PE
20.1	Control Box Cover	1	AOM11320058000057PE
20.2	Main Control Board	1	AOM11222031000779PE
20.3	Control Box	1	AOM11320057000069PE
20.5	Terminal Board	1	AOM11330037000157PE
20.6	E-parts Bracket	1	AOM11321015000061PE
21	Accessories	1	AOM11219005000166PE
21.1	Putty	1	AOM14618079000002PE
22	Tape	1	AOM11320022000016PE
23	Temperature Sensor	1	AOM11329013000105PE
24	Reactor	1	AOM11330034000008PE

**Note: The information presented is for the use of Professional HVAC Technicians. Subject to change without notice. Prices are subject to Shipping & Handling charges.**